



CREATING AND VISUALIZING DATA WITH GOOGLE EARTH



Google Earth is a computer program that allows you to visualise the Earth from the sky using a series of aerial or satellite images. The program allows you to superimpose your own points, lines and polygons and then share this information with others.

WHAT IS THE PURPOSE ?

To create and visualise your project data (such as water points, schools or other infrastructure, plots of land, and intervention villages...) using 3D satellite images.



- Easily create remote data based on satellite images
- Allows you to see satellite images of any place on the planet



- The maps that can be created are relatively basic
- Requires an internet connection to access the satellite images

Prerequisite

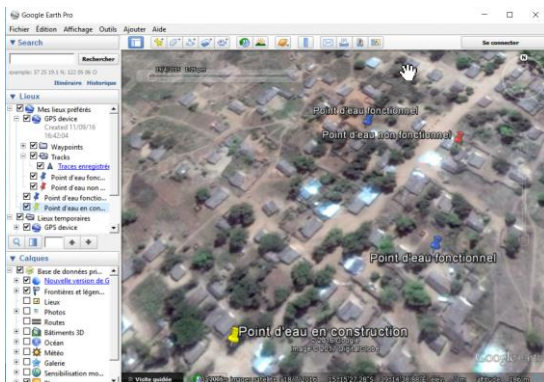
Download *Google Earth Pro* from the [Google Earth site](#). The license key is "GEPFREE".



HOW TO DO IT?

• **Creating data « layers »**

1. Create as many layers (types of information) as necessary (e.g. water points, plots of land, roads...). For each type of information add a sub-folder in « My favourite places » and define how it will be represented visually (choose the colours, line thickness, symbols etc.)



• **Create data (3 options):**

- Manually plot the points, lines or polygons that are associated with your points of interest (or, if you have them, enter their coordinates)
- Insert data from an external file (e.g. import GPS coordinates collected in the field).
- Add images and record a field visit

• **Share the data (2 options):**

- Save your data locally and send the results to your contacts
- Send the data directly from the program (file extension .kmz) to your contacts (this method will send the most recently saved version)



- When adding items manually, make sure you have selected the sub-folder or layer that contains these elements
- Items are either added to *temporary places* or *preferred places* on the sidebar according to the option that is selected – items added to *temporary places* will be lost after closing the program. Make sure you move data to *preferred places* if you wish to keep them.