

MONITORING YOUR WATER POINTS WITH mWATER EXPLORER

mWater Explorer is a mobile app that allows you to monitor wells or boreholes (in terms of water quality, flow, sanitary management etc.).

WHAT IS THE PURPOSE ?

The aim of the app is to improve access to water and sanitation services by monitoring them. It provides regular information about the infrastructures (water quality tests for a well, inspection of a latrine...). The app is preconfigured so that it responds to these needs, which reduces the set-up time compared to other tools.



- Preconfigured to enable you to monitor water points
- Free, easy to use and includes map views
- Builds on global initiatives



- Not very flexible if you want to modify the questions that are asked (preconfigured solution)

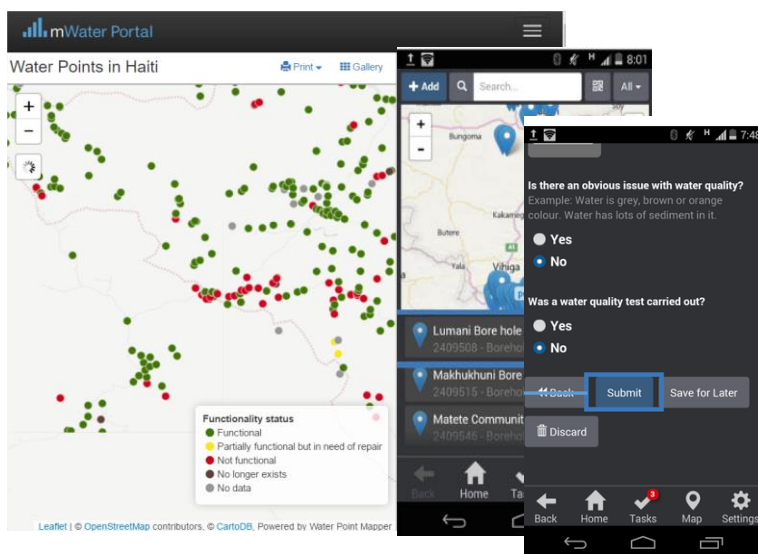
Prerequisites

- Install **mWater Explorer** from the app store on your mobile device (e.g. «Google Play Store »)
- Familiarise yourself with the app by working through the user manual



HOW TO DO IT ?

1. Open the tool
2. Create an account
3. Go to an infrastructure in the field and fill out the associated questionnaire (e.g. water quality)
4. Visit the website [mWater Portal](http://mwaterportal.org): the data collected in the field is available on this site and can be viewed.



The decision to use this type of tool should be taken at a project level and not just by one member of the project. Try to include it in organisational procedures and provide support to ensure that the associated change is successful.

mWater also provides another mobile app, *mWater Surveyor*, which allows projects to create questionnaires from scratch. However, it requires more advanced technical and methodological skills. To find out more about both apps, visit the [mWater site](http://mwaterportal.org).

